

Monolithic crystal filter MQF21.4-4600/08

Application

- 6 pol filter
- i.f.- filter
- use in mobile and stationary transceivers

Limiting values

		Unit	Value
Center frequency	f_0	MHz	21.4 ± 3 kHz
Insertion loss		dB	≤ 4.0
Pass band at 3.0 dB		kHz	± 23.00
Ripple in pass band	$f_0 \pm 18.00$ kHz	dB	≤ 2.0
Stop band attenuation	$f_0 \pm 120$ kHz	dB	≥ 70
Alternate attenuation	$f_0 \pm >120$ kHz	dB	> 70 except spurious

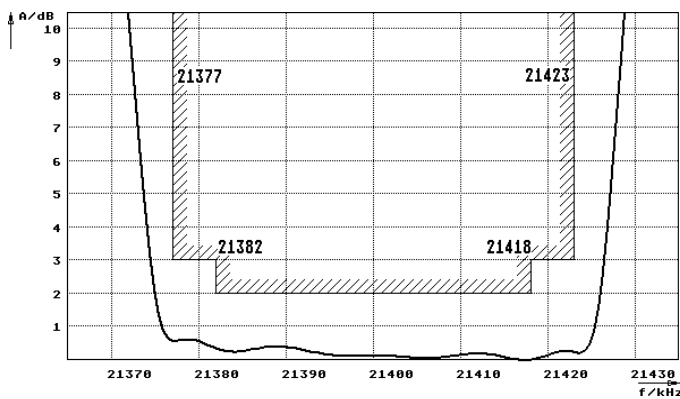
Terminating impedance Z

R1 C1	Ohm/pF	50 0
R2 C2	Ohm/pF	50 0

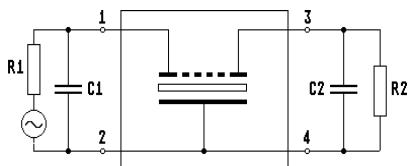
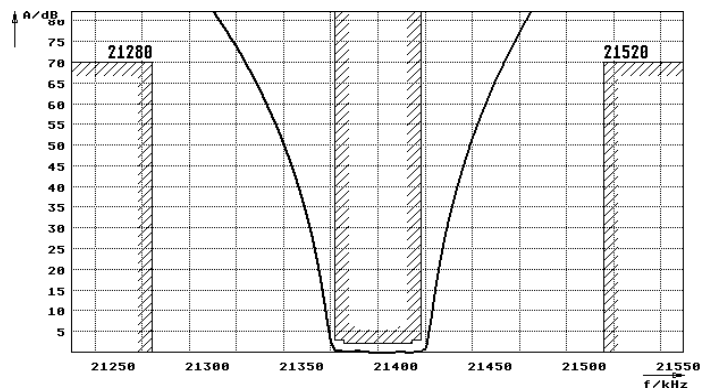
Storage temp. range	° C	-55... +100
Operating temp. range	° C	-40... +85

Characteristics MQF21.4-4600/08

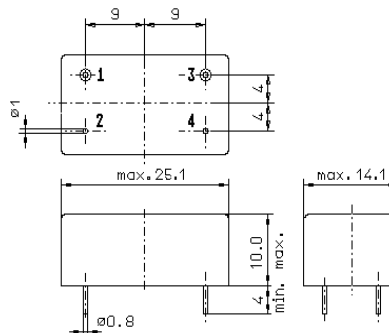
Pass band



Stop band



Pin connections: 1 Input
2 Input-E
3 Output
4 Output-E



GM3